

## Collaboration and Integration of Sequence Stratigraphy, Seismic Inversion and Comprehensive Seismic Interpretation Unlocking the Remaining Exploration Potential

Haslina Bt Mohamed<sup>1\*</sup>, Dyg Hassapariah Sapri<sup>1</sup>, Tee Wei Yong<sup>1</sup>, Nicolas Daynac<sup>2</sup>, Liew Wei Long<sup>1</sup>, Shamsudin B Jirim<sup>1</sup>, M Faez B Harun<sup>1</sup>, Ima Nazmi Bt Bahadon<sup>1</sup>, Jahan Zeb Ahmed<sup>1</sup>, Farhana Bt Amiruzan<sup>1</sup>, Zuliyana Bt Ibrahim<sup>1</sup>, Hasnor Farhana Hasnan<sup>1</sup>, Nurul Hanani Bt Tajul Nahar<sup>1</sup>, Nur Lydia Zainal<sup>1</sup>, and Sebastien. Lacaze<sup>2</sup>.  
PETRONAS Carigali Sdn. Bhd. (PCSB) 1, Eliis 2.

### Introduction

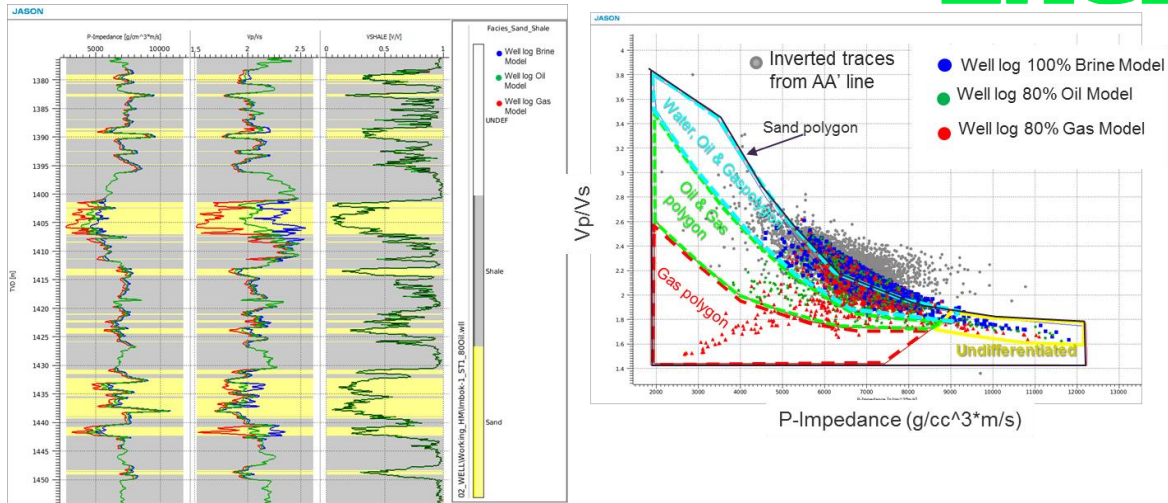
Seismic inversion is widely known as the best technology for reservoir and hydrocarbon predictions in field development and exploration area with well calibration.. However, there is high uncertainty in prediction inherited in the exploration phase as a result of lacking in well control and/or lack of elastic logs (density, p & s sonic). To date, the seismic inversion technology showed high success ratio of reservoir prediction in exploration wells, thus increases the confidence level of reservoir predictability in exploration area. However, hydrocarbon predictability from seismic inversion technology is still high as the result is highly dependent on trap effectiveness and hydrocarbon charge. The uncertainty of hydrocarbon prediction can be reduced by integrating results from other studies and collaboration with several keys disciplines to fill-in the gaps in Petroleum System Element.

An integrated studies was carried out at the Northeast corner of SB313 exploration block, located less than 10 km from the Erb West and the Erb South oil and gas fields. The main objective of this study is to understand the subsurface reservoir distribution, continuity and correlation within target intervals, Stage IVA, IVB & IVC for a number of prospects. The analysis was then further extended to map lateral distribution of stage IVD top seal to support hydrocarbon prediction anomaly from the seismic inversion result.

### Method and/or Theory

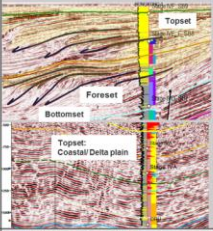
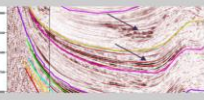
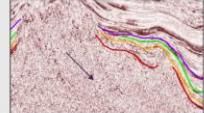
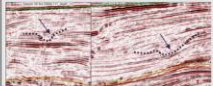
The study was carried out in three stages 1) Seismic Inversion, 2) Sequence Stratigraphy and 3) Comprehensive Seismic Interpretation.

Simultaneous AVO Inversion was selected as the best technology and widely used for lithology and fluid prediction in AI and Vp/Vs domain (Avseth et al, 2010, Mohamed et al 2013 & 2015). The initial and key step are data quality control and conditioning of wells, seismic angle stacks and seismic velocity. Fluid substitution analysis using Gassmann Dry Rock Model is conducted to test the sensitivity of discrimination between gas, oil and water (Fig.1). The conditioned seismic interval velocity was used as secondary trend in the low frequency model building. Near, mid and far seismic stacks were inverted using respective wavelets simultaneously to produce elastic traces of AI, Vp/Vs and Density. In this study, only the inverted AI and Vp/Vs were used and calibrated with wells for lithology and fluid predictions over the area and vertical zone of interest.



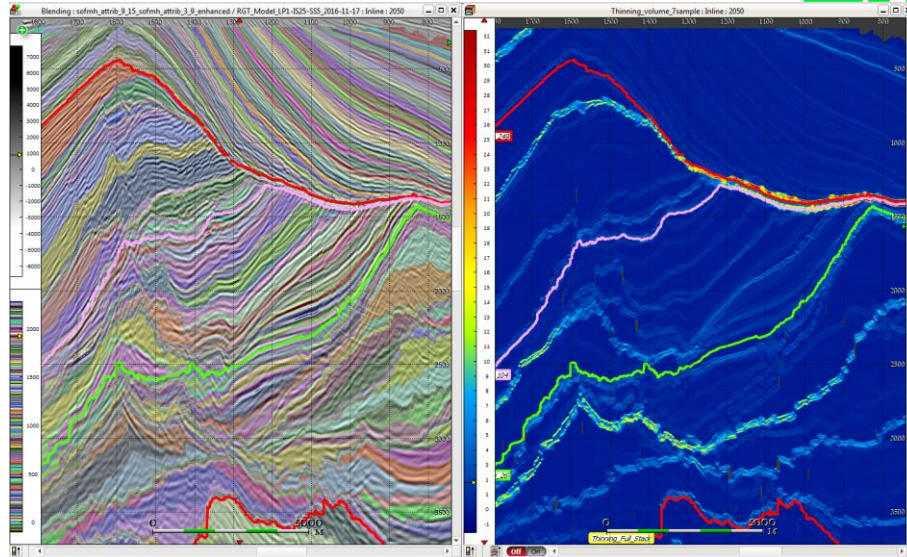
**Figure-1** (Left): Well log plot of fluid substituted elastic logs (AI and Vp/Vs) for 100% brine saturated, 80% oil saturated and 80% gas saturated. (Right): Crossplot of AI-Vp/Vs of elastic logs colour coded by modelled fluids and inverted traces.

A sequence stratigraphic study was carried out on several selected key 2D and 3D seismic lines. Reflectors termination was firstly picked on the seismic section and identified as possible sequence boundaries, which later calibrated to wells (Vail et al, 1990). Once the sequence boundaries established, seismofacies and depositional environment within each sequences were postulated based on seismic facies characteristic (Mitchum et al, 1977) (Fig.2).

Seismofacies & Depositional Environment	Seismic Examples	Seismic Characters	Seismofacies & Depositional Environment	Seismic Examples	Seismic Characters
Topsets: Coastal/Delta Plain (mixed) Topsets: Shelf & Delta front (sand prone) Foresets to Bottomsets: slope to basinal (shale prone)		<b>Topsets:</b> Continuous to discontinuous, parallel, generally high amplitude. Continuous topsets (shelf/delta front) Discontinuous topsets (coastal/delta plain) <b>Foresets:</b> Sigmoidal & oblique seismic reflection patterns, low amplitudes, with pinch-out & downlap configuration. <b>Bottomsets:</b> Continuous to discontinuous, variable amplitude, usually recognized by association with the foresets.	Pondered turbidites, turbidite fans: slope to basinal Mobile shale?	 	High amplitude, mounded features & pinch out. Base of slope basinal, can be sand prone (high amplitudes). Differentiated from topset by association with deepwater seismic features such as slope channel, turbidite fans and slump deposits. Chaotic, discontinuous with low amplitude reflectors. Represent as mobilized deepwater shale.
Channelized features: Shelf edge to upper slope.		High amplitude channelized features, erosional surfaces with channel incision.			

**Figure-2** Seismic facies character used for seismofacies and depositional environment interpretation.

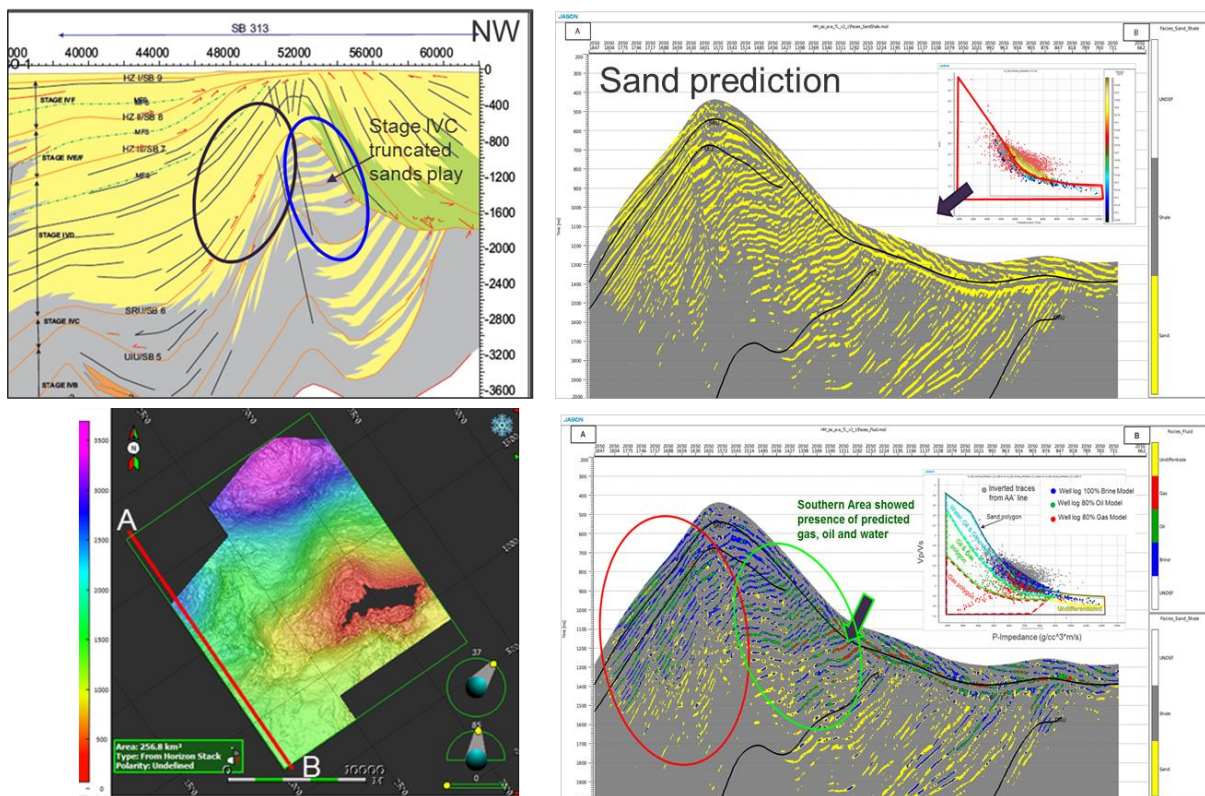
As a key step to assess the robustness of the inversion modelling result, a comparison between the modelled reservoir facies generated seismic inversion and reservoir facies interpreted from seismic sequence stratigraphy was conducted on the same key line. Upon satisfactory results from this step are achieved, further analysis can be made to understand the lateral distribution of the reservoir and sealing mechanism. This will further increase confidence to fluid prediction from seismic inversion. PaleoScan™ software, a new advanced interpretation technology developed by Ellis was used to produce a Relative Geological Time model (RGT) from seismic (Pauget et al, 2009). From the RGT volume, a “thinning” attribute (Lacaze et al, 2011) was then calculated from stratigraphic thickness over the whole 3D volume (Fig.3). This attribute corresponds to the vertical derivative of the RGT and reveals the instantaneous variations of the geological layers in the volume for each seismic sample. Thinning attributes extracted within a stratigraphic interval can give an insight to sediment accommodation space. The result was then compared to the existing Paleogeography maps to see areal distribution of the potential top seal over the study area.



**Figure-3** (Left): Relative Geological Time model (RGT) blended with seismic amplitude. (Right): Thinning attribute calculated from RGT vertical derivative. The observed relative maximum of thinning (hot colour) corresponds to an unconformities

**Results**

The stratigraphic model in figure-4 shows good agreement with sand prediction and distribution modelled through the seismic inversion method. It shows a potential presence of good seal provided by the coastal plain shale of Stage-IVD in the southern area. Based on the inversion study result, the southern flank also indicated that there is potential presence of hydrocarbon.



*Figure-4 (Top Left): NW-SE Geoseismic section showing the sand distribution and presence of coastal/delta plain shale in stage IVD can be the top seal for underneath sediment. (Top Right): NW-SE sand prediction section produced from seismic inversion analysis. (Bottom Right): NW-SE fluid prediction section from seismic inversion analysis.*

## Conclusions

The integration of sequence stratigraphy, seismic inversion and advanced seismic interpretation technology (RGT model) provided value by improving confidence level in fluid predictions. Through this effort, at least three additional untested combined structural-stratigraphic traps remained in the block.

## Acknowledgements

We would like to thank the management of PETRONAS for permission to present this paper and to SB313 Exploration Sabah Venture team, Sequence Stratigraphy team (EGRS) and Quantitative Geophysics Team (EGPS) and Eliis for their continuous support in demonstrating the value of collaboration and integration of multiple disciplines in the software PaleoScan™.

## References

- Avseth, P., Mukerij, T. and Mavko, G., 2010, Quantitative Seismic Interpretation, Applying Rock Physics Tools to Reduce Interpretation Risk: Cambridge University Press, 96-101.
- Lacaze S., Pauget F., Mangué M., Lopez M. Gay A., SEG 2011, Seismic Interpretation from a geological model, a North Sea case study, SEG Expanded Abstracts, 81st SEG Conference & Exhibition San Antoni.
- Mitchum, R.M., JR., Vail, P.R. and Sangree, J.B., 1977. Seismic stratigraphy and global changes of sea level – part 6: stratigraphic interpretation of seismic reflection patterns in depositional sequences. In: Payton, C.E. (Ed), Seismic stratigraphy-application to hydrocarbon exploration. AAPG memoir 20, 117 – 134.
- Mohamed, H., Danial, R., 2013. Leads and Prospect Delineation Using Rock Fluid Index with Case Example from Clastics Sediment, PM330. PGCE 2013, Kuala Lumpur.
- Mohamed, H., Kurniawan, T., M Zaffa, F., Hamzah, M.R., Mohamed, N., Martinez, L.G., Paton, G. 2015, Integrated 3D Quantitative Analysis and Interpretation of Pay Sand in Basin Floor Channel Complexes – Case Study Example in Deep Water Sabah. APGCE 2015, Kuala Lumpur.
- Daynac, N., Lacaze, S., Mangué, M., Pauget, F. 2014. Interpretation of Complex Faulted Deposits in the North Sea Using a Relative Geological Time Model. 76<sup>th</sup> EAGE Conference & Exhibition 2014, Amsterdam.
- Pauget, F., S. Lacaze, and T. Valding, 2009, A global approach in seismic interpretation based on cost function minimization: 79th Annual International Meeting, SEG, Expanded Abstracts, 5, 2592–2596.
- Van Wagoner, J.C., Mirchum, R.M., Champion, K.M. and Rahmanian, V.D., 1990. Siliclastic sequence stratigraphy in well logs, cores and outcrops. AAPG Methods in Exploration Series No.7